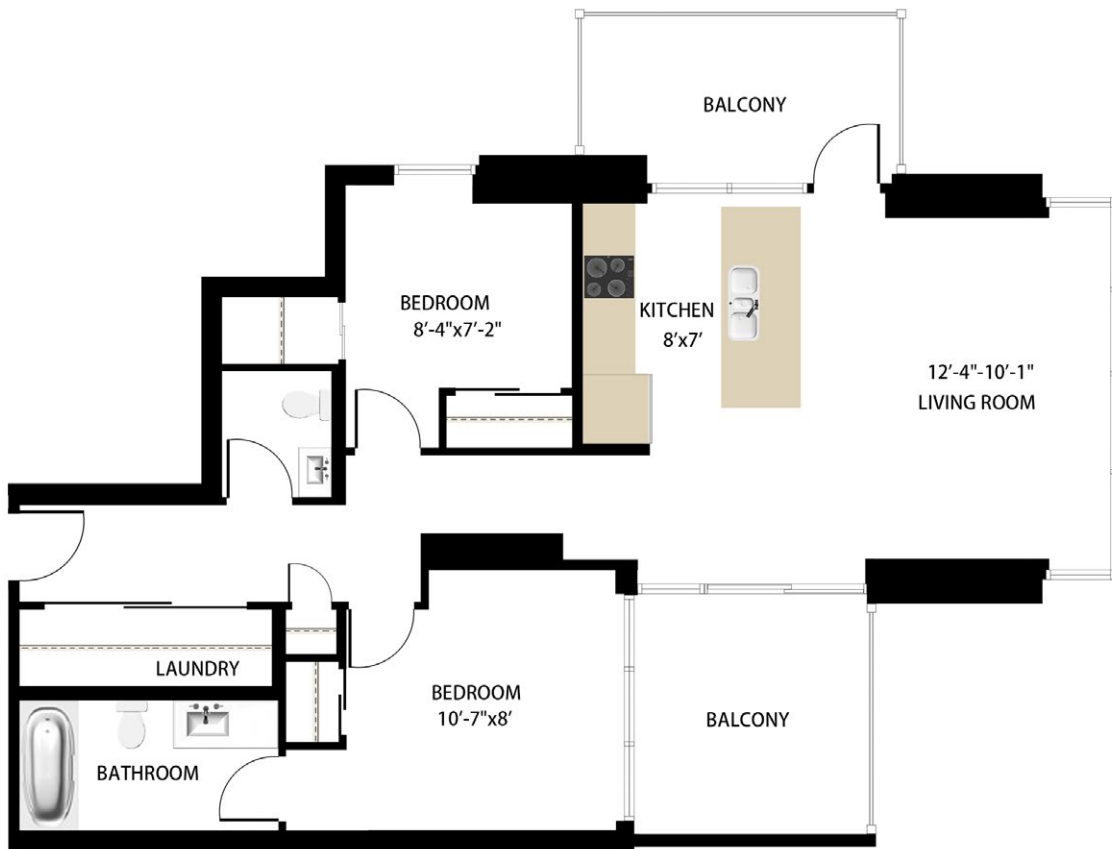




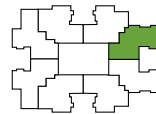
CENTRAL TOWER

07 - Sunrise - NE

GOLD PLANS



2 BEDS • 2 BATHS
702 SQFT • BALCONY 155 SQFT



CENTURY PARK

In the interest of product improvement and maintaining the high standard of these homes, the developer reserves the right to make modifications and changes to plans, specifications and features. Sizes and dimensions are approximate and may vary with actual survey. E&OE.

1.888.678.6961 • centraltower.ca


Signs of Change
INITIATIVE

DEVELOPED BY
PRCORA